



P.L. : 1001-F01

Effective
Replaces

May 2016
November 2014

PARTS LIST
PUMPS
C12 A - C18 A

Keep this parts lists with Installation, Operation and Maintenance Instructions.

To order the required spare parts, indicate the desired Reference(s).

Sets of parts or parts available to order.

CVT : FEP encapsulated FKM

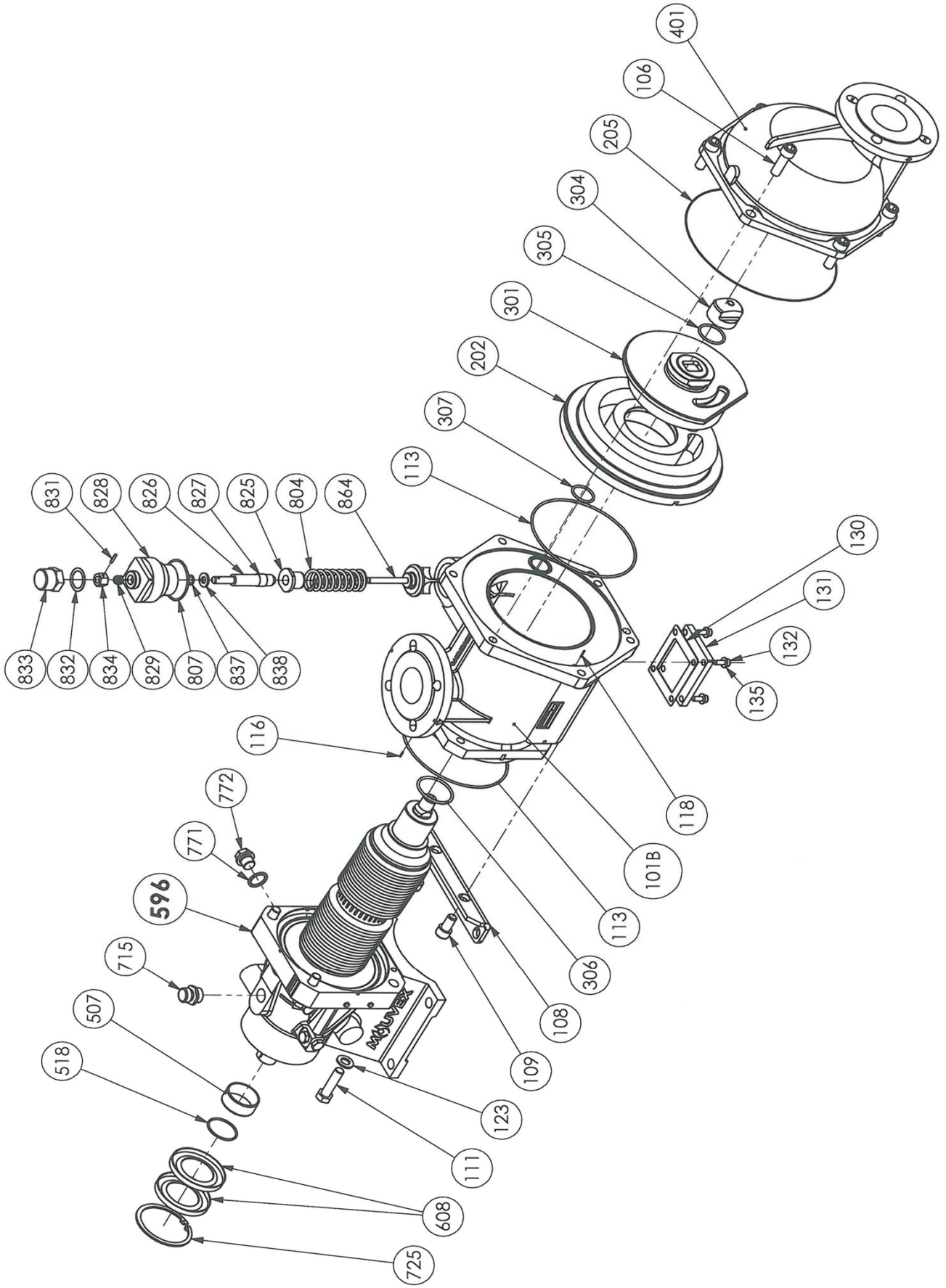


Дистрибутор:

България, София 1528, ул."Поручик Неделчо Бончев" 3, ет.5

+359 2 973 27 67, +359 2 973 2370; office_bg@opwmarket.com

C12 A - C18 A



C12 A

* 1, 2, 4... : Quantity in equipment - (1), (2), (4)... : Quantity in kit

Item	Available	Description	Qty*	Ref.	Maintenance kit	Wear part
8	◆	PLUGS + BREATHER	1	314259.01		
715		SNIFTER VALVE	(1)			●
771		SEAL	(1)			●
772		PLUG	(1)			
9	◆	BEARING GASKETS _ RING SET	1	312855.01		
507		SEAL RING	(1)			●
518		O-RING	(1)			●
608		LIP SEAL	(2)			●
725		CIRCLIPS	(1)			
100	◆	INLET MANIFOLD PN16 PN20	1	311512.01		
100	◆	JACKETED INLET MANIFOLD FLANGE PN16 PN20	1	311513.01		
101B		MAIN BODY	(1)			
108		SUPPORT FOOT	(1)			
109		SCREW	(2)			
116		PIN	(1)			
118		PIN	(1)			
131		PLATE (WITH HEAT JACKET MAIN BODY)	(1)			
119	◆	SET OF SCREWS	1	311757.00		
106		SCREW	(6)			
111		SCREW	(4)			
123		WASHER	(4)			
119	◆	JACKETED SET OF SCREWS	1	311758.00		
106		SCREW	(6)			
111		SCREW	(4)			
123		WASHER	(4)			
132		SCREW	(4)			
135		WASHER	(4)			
200	◆	SET CYLINDER_PISTON	1	312872.01	■	
201		CYLINDER	(1)			●
301		PISTON	(1)			●
304	◆	PISTON NUT	1	218053		●
206	◆	SET OF CVT 'O' RING SEALS	1	311895.02	■	
206	◆	SET OF CVT 'O' RING SEALS -JACKETED VERSION-	1	311896.02	■	
206	◆	SET OF FKM 'O' RING SEALS	1	311517.02	■	
206	◆	SET OF FKM 'O' RING SEALS -JACKETED VERSION-	1	311518.02	■	
113		SEAL	(2)			●
130		SEAL (HEAT JACKET VERSION)	(1)			●
205		SEAL RING	(1)			●
305		SEAL	(1)			●
306		SEAL	(1)			●
307		SEAL	(1)			●
401	◆	FRONT COVER	1	218142		
		COMPLETE TRANSMISSION :				
596	◆	WITHOUT BELLOWS MONITORING SYSTEM - JACKET	1	313848.01	■	●
596	◆	WITH ATEX PRESSURE SWITCH BELLOWS MONITORING SYSTEM - JACKET	1	313791.02	■	●
596	◆	WITH PRESSURE SWITCH BELLOWS MONITORING SYSTEM - JACKET	1	313671.02	■	●

C12 A

* 1, 2, 4... : Quantity in equipment - (1), (2), (4)... : Quantity in kit

Item	Available	Description	Qty*	Ref.	Maintenance kit	Wear part
820	◆	BYPASS - CVT -C2.5	1	313144.01		
820	◆	BYPASS - CVT -C6.5	1	313146.01		
820	◆	BYPASS - CVT -C8	1	313147.01		
820	◆	BYPASS - FKM -C2.5	1	313139.01		
820	◆	BYPASS - FKM -C6.5	1	313141.01		
820	◆	BYPASS - FKM -C8	1	313142.01		
804		SPRING	(1)			
825		SPRING BASE	(1)			
826		ADJUSTING SCREW	(1)			
827		SPACER (BYPASS C8)	(1)			
828		NUT	(1)			
829		SPRING	(1)			
831		PIN	(1)			
833		BYPASS CAP	(1)			
834		NUT	(1)			
838		WASHER	(1)			
864		COMPLETE VALVE	(1)			
896	◆	SET OF BYPASS SEALS CVT	1	313175.02	■	
896	◆	SET OF BYPASS SEALS FKM	1	313174.02	■	
807		SEAL	(1)			●
832		SEAL	(1)			●
837		O-RING	(1)			●

C18 A

* 1, 2, 4... : Quantity in equipment - (1), (2), (4)... : Quantity in kit

Item	Available	Description	Qty*	Ref.	Maintenance kit	Wear part
8	◆	PLUGS + BREATHER	1	314259.01		
715		SNIFTER VALVE	(1)			●
771		SEAL	(1)			●
772		PLUG	(1)			
9	◆	BEARING GASKETS _ RING SET	1	312855.01		
507		SEAL RING	(1)			●
518		O-RING	(1)			●
608		LIP SEAL	(2)			●
725		CIRCLIPS	(1)			
100	◆	INLET MANIFOLD PN16 PN20	1	311512.01		
100	◆	JACKETED INLET MANIFOLD FLANGE PN16 PN20	1	311513.01		
101B		MAIN BODY	(1)			
108		SUPPORT FOOT	(1)			
109		SCREW	(2)			
116		PIN	(1)			
118		PIN	(1)			
131		PLATE (WITH HEAT JACKET MAIN BODY)	(1)			
119	◆	SET OF SCREWS	1	311757.00		
106		SCREW	(6)			
111		SCREW	(4)			
123		WASHER	(4)			
119	◆	JACKETED SET OF SCREWS	1	311758.00		
106		SCREW	(6)			
111		SCREW	(4)			
123		WASHER	(4)			
132		SCREW	(4)			
135		WASHER	(4)			
200	◆	SET CYLINDER_PISTON	1	312873.01	■	
201		CYLINDER	(1)			●
301		PISTON	(1)			●
304	◆	PISTON NUT	1	218397		●
206	◆	SET OF CVT 'O' RING SEALS	1	311895.02	■	
206	◆	SET OF CVT 'O' RING SEALS -JACKETED VERSION-	1	311896.02	■	
206	◆	SET OF FKM 'O' RING SEALS	1	311517.02	■	
206	◆	SET OF FKM 'O' RING SEALS -JACKETED VERSION-	1	311518.02	■	
113		SEAL	(2)			●
130		SEAL (HEAT JACKET VERSION)	(1)			●
205		SEAL RING	(1)			●
305		SEAL	(1)			●
306		SEAL	(1)			●
307		SEAL	(1)			●
401	◆	FRONT COVER	1	218142		
		COMPLETE TRANSMISSION :				
596	◆	WITHOUT BELLOWS MONITORING SYSTEM - JACKET	1	313848.01	■	●
596	◆	WITH ATEX PRESSURE SWITCH BELLOWS MONITORING SYSTEM - JACKET	1	313791.02	■	●
596	◆	WITH PRESSURE SWITCH BELLOWS MONITORING SYSTEM - JACKET	1	313671.02	■	●

C18 A

* 1, 2, 4... : Quantity in equipment - (1), (2), (4)... : Quantity in kit

Item	Available	Description	Qty*	Ref.	Maintenance kit	Wear part
820	◆	BYPASS - CVT -C2.5	1	313144.01		
820	◆	BYPASS - CVT -C5.5	1	313145.01		
820	◆	BYPASS - FKM -C2.5	1	313139.01		
820	◆	BYPASS - FKM -C5.5	1	313140.01		
804		SPRING	(1)			
825		SPRING BASE	(1)			
826		ADJUSTING SCREW	(1)			
827		SPACER (BYPASS C5.5)	(1)			
828		NUT	(1)			
829		SPRING	(1)			
831		PIN	(1)			
833		BYPASS CAP	(1)			
834		NUT	(1)			
838		WASHER	(1)			
864		COMPLETE VALVE	(1)			
896	◆	SET OF BYPASS SEALS CVT	1	313175.02	■	
896	◆	SET OF BYPASS SEALS FKM	1	313174.02	■	
807		SEAL	(1)			●
832		SEAL	(1)			●
837		O-RING	(1)			●